



NEW ROUTE



ROUTE CHANGE



FREQUENCY CHANGE



NO CHANGE

## ROUTE SUMMARY

Route 800 will run in a clockwise loop from H.R. Banke Justice Center along Tara Blvd., Lovejoy Rd., Panhandle Rd., McDonough Rd., E. Lovejoy Rd., Hasting Bridge Rd., Tallmadge Rd., in the City of Lovejoy, returning to the Justice Center. The midday frequency of this route is unchanged (**60 minutes**). For more details, refer to the table below.

### FREQUENCIES AND HOURS OF OPERATION\*

#### MONDAY - FRIDAY

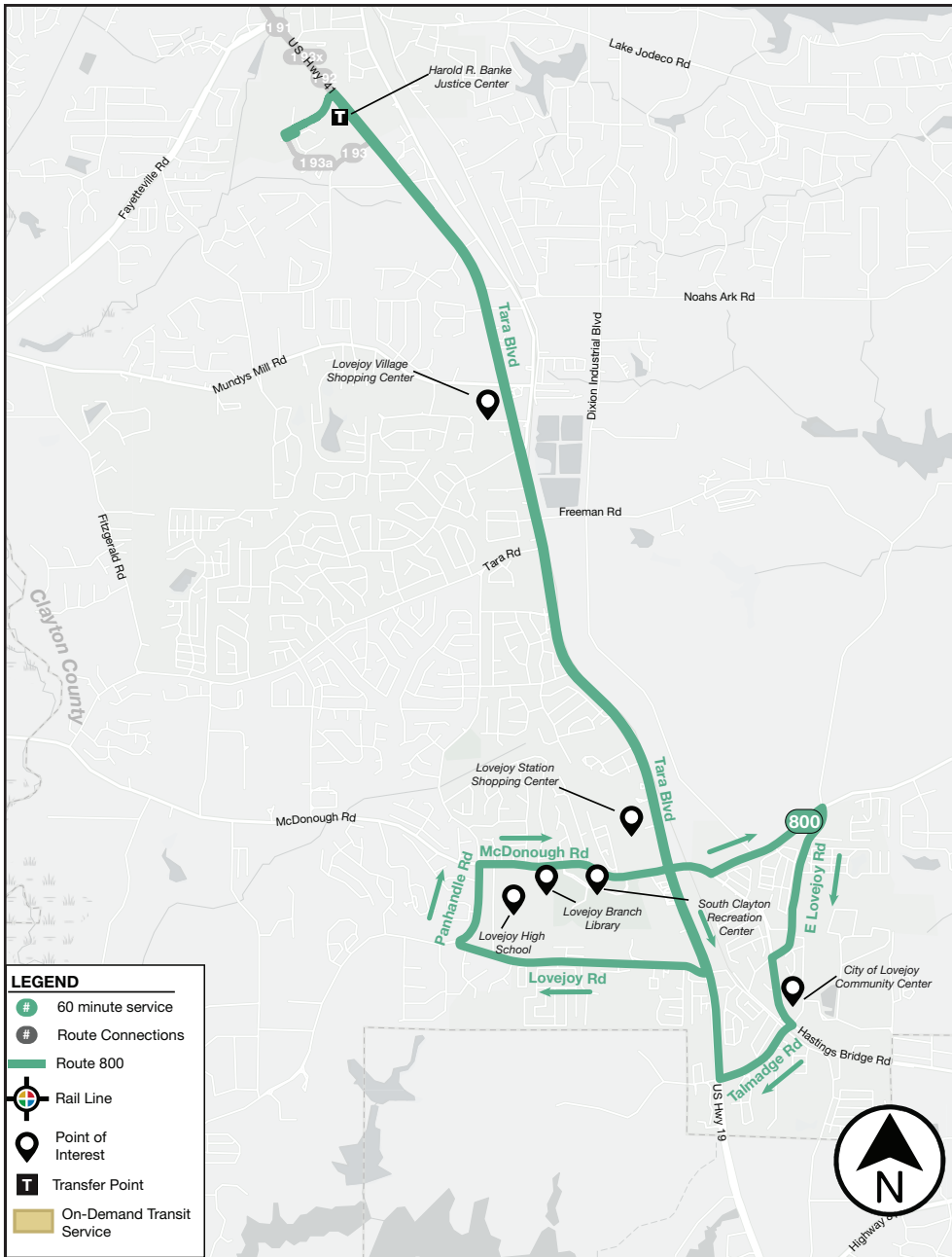
	EARLY MORNING 5 AM - 6 AM	AM PEAK 6 AM - 9 AM	MIDDAY 9 AM - 3 PM	PM PEAK 3 PM - 7 PM	EVENING 7 PM - 9 PM	NIGHT 9 PM - 1 AM
EXISTING	60	60	60	60	60	60

#### SATURDAY - SUNDAY - HOLIDAY

	EARLY MORNING 5 AM - 6 AM	MORNING 6 AM - 9 AM	MIDDAY 9 AM - 3 PM	EARLY EVENING 3 PM - 7 PM	EVENING 7 PM - 9 PM	NIGHT 9 PM - 1 AM
EXISTING	60	60	60	60	60	60

*\*Frequencies indicate the average time, in minutes, between bus arrivals. This table displays approximate hours of operation. Actual hours of operations may vary per route.*





## PROVIDE FEEDBACK

Share your thoughts on the proposed NextGen Bus Network Redesign at [www.MARTANextGenBusNetwork.com](http://www.MARTANextGenBusNetwork.com).

## PROPOSED CONNECTIONS

**BUS**  
191, 192, 193